

Harrop LSA Billet Fuel Rail - Features

1 Jun 2022

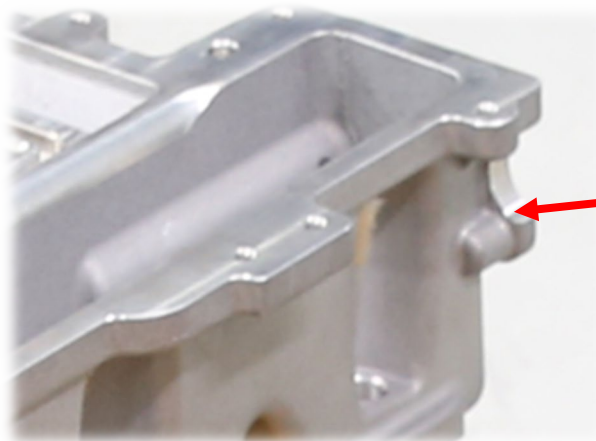
- Fully designed in Australia and manufactured from 6061 aluminium by Harrop Engineering.
- Developed to suit Harrop 2650i LSA Supercharger or factory LSA 1900 Supercharger. (Factory LSA supercharger will require some modification to enable feed lines to connect into the rails, see image below).
- Designed to flow more fuel than standard LSA rails, incorporates AN8 O-ring port connections (3/4 UNF).
- By not fitting the front plugs the rails can be used to install a full return line system.
- Incorporates all factory mounting positions.
- The Harrop design enables the OEM safety clips to be retained unlike some others on the market.
- The fuel rails also have side plugs opposite each injector that can be removed to install fuel pressure sensors (Thread size M10x1.0 pitch)
- Compatible with E85 fuel



Removable plugs for sensor fitment



Factory OEM safety clip retained



The Harrop H2650i has already had the flange machined to accept billet fuel rails

Optional extras

A Speedflow manufactured rear cross over hose with OEM style crimped AN8 hose and AN8 feed point.

Part Number **98-HOS15746**



ENGINEERING PERFORMANCE SINCE 1955