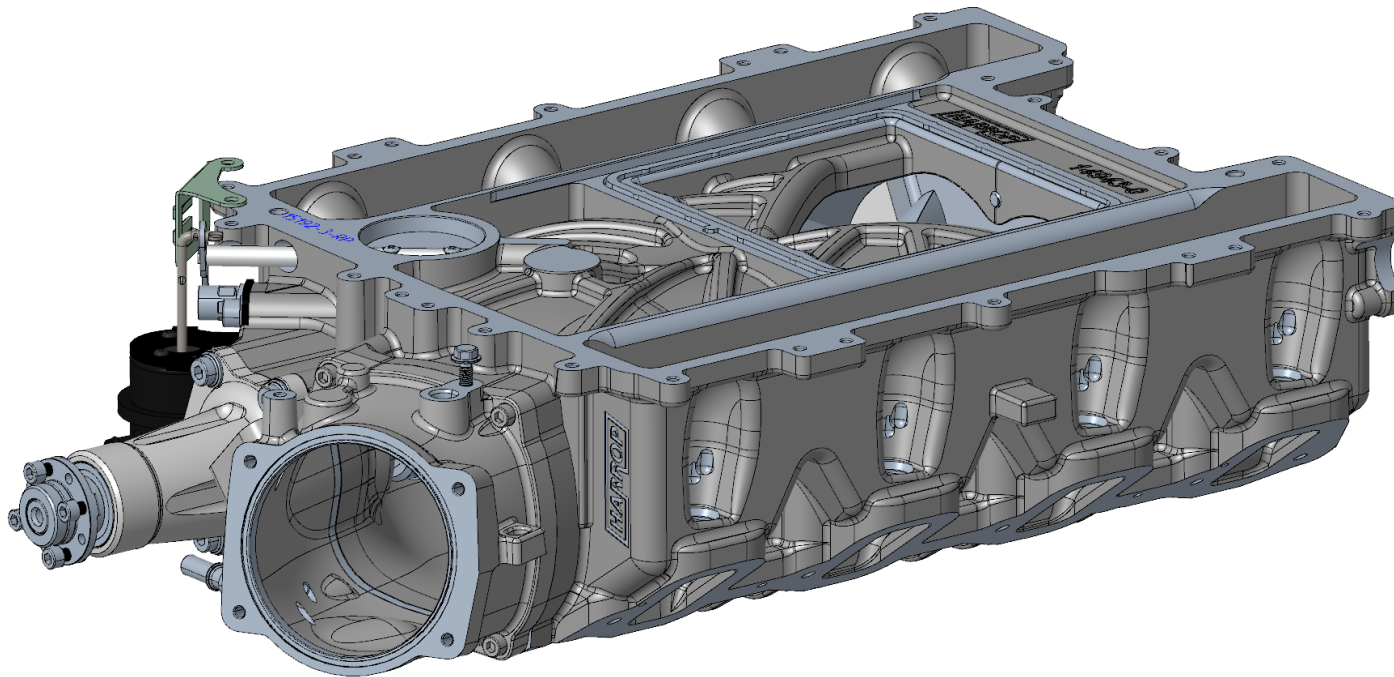


# Tech Guide

## LSA-H2650i Supercharger



Harrop Engineering develops and manufactures premium supercharger kits in Melbourne, Australia. Through 60 years of automotive performance Engineering, Harrop Engineering have successfully manufactured and supplied Superchargers to Automotive OEM programmes including TRD, Lotus Cars and Ford Australia. Harrop Engineering is certified to meet ISO 9001 standards of quality. OEM Quality, performance and vehicle integration are the foundation of Harrop Supercharger kits.

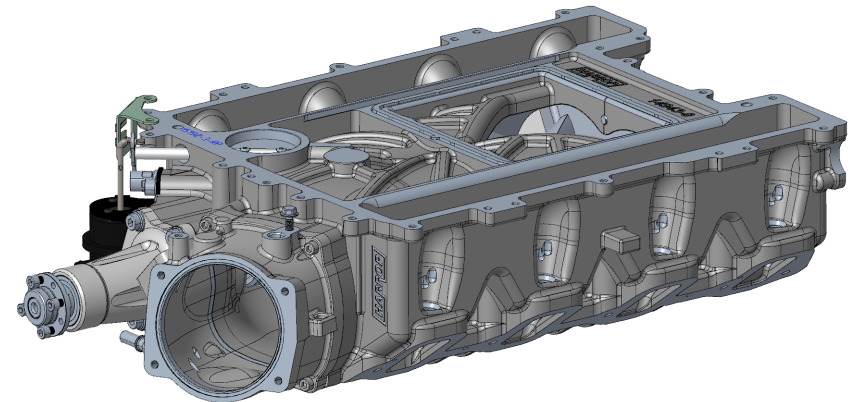


E N G I N E E R I N G   P E R F O R M A N C E   S I N C E   1 9 5 5

15/08/2025

### Standard Features

- Optional pulley's available at time of purchase including GripTec variants and overdrive balancers.
- Supercharger manifold incorporates independent drive and throttle body housings allowing flexible throttle body applications without the need to replace the drive assembly. The supercharger is supplied with an adaptor that accepts standard LSA ETC and 102/103 with use of spacer 99-SPC15300
- New range of 8PK pulleys available as per table below to suit standard LSA drive, coming in 2021 Harrop will stock limited quantities of GripTec alternatives.
- Optional Harrop manufactured manifold thermal insulators available at time of purchase.
- OEM fuel lines, rails and upper manifold are direct bolt on.
- A relocation bracket is supplied for the by-pass boost control solenoid valve.
- All standard hoses will fit/connect. (Valley plate breather to throttle body adaptor, booster etc.)
- The design retains the standard LSA type intercooled by-pass system.
- Manifold is machined to accept return style fuel rail system.
- The supercharger manifold is identical in height to the OEM so there should be no foul conditions.



E N G I N E E R I N G   P E R F O R M A N C E   S I N C E   1 9 5 5

15/08/2025

# Tech Guide

## LSA-H2650i Supercharger



### Harrop LSA-H2650i drive pulley matrix

HARROP 2650i LSA DRIVE PULLEY								
DRIVE RATIO	SUPERCHARGER SPEED AT 6600 CRANKSHAFT RPM	SUPERCHARGER PULLEY Ø	SUPERCHARGER PULLEY PART NUMBER	SUPERCHARGER PULLEY DESCRIPTION	CRANK PULLEY Ø	OVERDRIVE CRANK BALANCER	BELT LENGTH	TENSIONER POSITION
3.06	20206	65	99-PLY15004	Pulley S/Chrgr 8PK, 65x30x17.1 Offset, 4x40PCD	199	0%	1650	4
2.84	18763	70	99-PLY15005	Pulley S/Chrgr 8PK, 70x30x17.1 Offset, 4x40PCD	199	0%	1650	4
2.65	17512	75	99-PLY15006	Pulley S/Chrgr 8PK, 75x30x17.1 Offset, 4x40PCD	199	0%	1660	4
2.49	16418	80	99-PLY15007	Pulley S/Chrgr 8PK, 80x30x17.1 Offset, 4x40PCD	199	0%	1660	4
2.34	15452	85	99-PLY15008	Pulley S/Chrgr 8PK, 85x30x17.1 Offset, 4x40PCD	199	0%	1680	4
2.21	14593	90	99-PLY15009	Pulley S/Chrgr 8PK, 90x30x17.1 Offset, 4x40PCD	199	0%	1680	4
3.21	21216	65	99-PLY15004	Pulley S/Chrgr 8PK, 65x30x17.1 Offset, 4x40PCD	209	5%	1660	4
2.99	19701	70	99-PLY15005	Pulley S/Chrgr 8PK, 70x30x17.1 Offset, 4x40PCD	209	5%	1660	4
2.79	18388	75	99-PLY15006	Pulley S/Chrgr 8PK, 75x30x17.1 Offset, 4x40PCD	209	5%	1680	4
2.61	17238	80	99-PLY15007	Pulley S/Chrgr 8PK, 80x30x17.1 Offset, 4x40PCD	209	5%	1700	4
2.46	16224	85	99-PLY15008	Pulley S/Chrgr 8PK, 85x30x17.1 Offset, 4x40PCD	209	5%	1700	4
2.32	15323	90	99-PLY15009	Pulley S/Chrgr 8PK, 90x30x17.1 Offset, 4x40PCD	209	5%	1700	4
3.37	22227	65	99-PLY15004	Pulley S/Chrgr 8PK, 65x30x17.1 Offset, 4x40PCD	219	10%	1700	4
3.13	20639	70	99-PLY15005	Pulley S/Chrgr 8PK, 70x30x17.1 Offset, 4x40PCD	219	10%	1700	4
2.92	19263	75	99-PLY15006	Pulley S/Chrgr 8PK, 75x30x17.1 Offset, 4x40PCD	219	10%	1700	4
2.74	18059	80	99-PLY15007	Pulley S/Chrgr 8PK, 80x30x17.1 Offset, 4x40PCD	219	10%	1725	4
2.58	16997	85	99-PLY15008	Pulley S/Chrgr 8PK, 85x30x17.1 Offset, 4x40PCD	219	10%	1735	4
2.43	16053	90	99-PLY15009	Pulley S/Chrgr 8PK, 90x30x17.1 Offset, 4x40PCD	219	10%	1735	4
3.61	23843	65	99-PLY15004	Pulley S/Chrgr 8PK, 65x30x17.1 Offset, 4x40PCD	234	18%	1725	4
3.35	22140	70	99-PLY15005	Pulley S/Chrgr 8PK, 70x30x17.1 Offset, 4x40PCD	234	18%	1740	4
3.13	20664	75	99-PLY15006	Pulley S/Chrgr 8PK, 75x30x17.1 Offset, 4x40PCD	234	18%	1740	4
2.94	19373	80	99-PLY15007	Pulley S/Chrgr 8PK, 80x30x17.1 Offset, 4x40PCD	234	18%	1755	4
2.76	18233	85	99-PLY15008	Pulley S/Chrgr 8PK, 85x30x17.1 Offset, 4x40PCD	234	18%	1755	4
2.61	17220	90	99-PLY15009	Pulley S/Chrgr 8PK, 90x30x17.1 Offset, 4x40PCD	234	18%	1780	4

**Red** highlighted cells indicate high Supercharger speed @ 6600 crank rpm – warranty void

### Specifying pulley's

If you would like to use the GripTec equivalent the pulley part number should be expressed as the following:

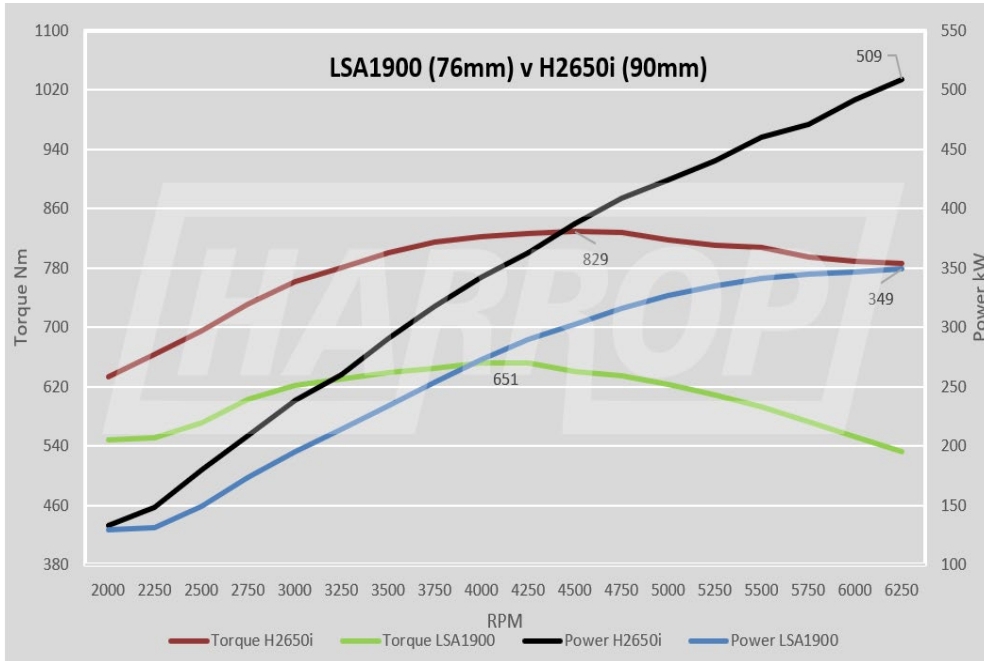
- *Standard Harrop pulley,*      **99-PLY15008**
- *GripTec equivalent pulley,*      **99-PLY15008-GT**

ENGINEERING PERFORMANCE SINCE 1955

15/08/2025

# Tech Guide

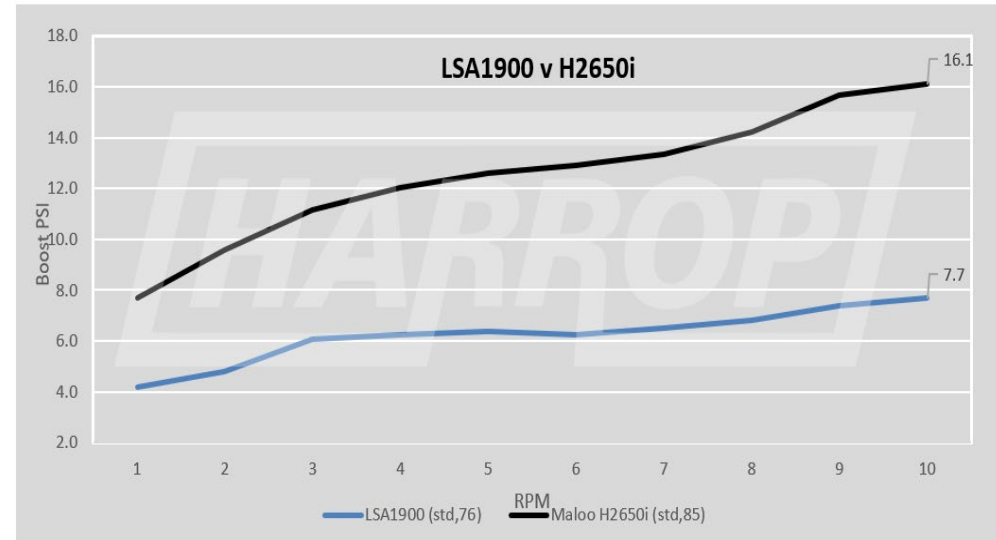
## LSA-H2650i Supercharger



**Power and Torque Comparison**

\*Data Correction: 3.29 SAE J607 (20.7°C, 1002mBrA, 44%), Fuel 98 RON (93AKI)

**Boost Comparison**



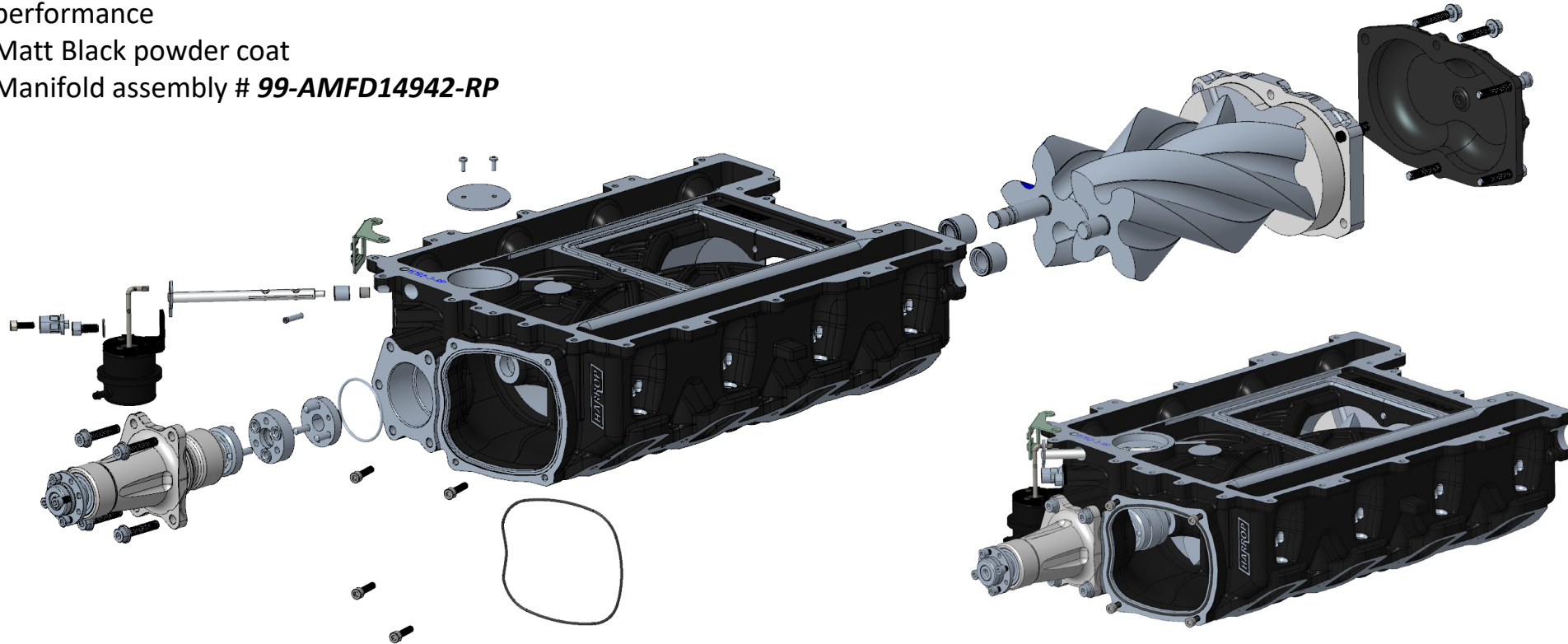
ENGINEERING PERFORMANCE SINCE 1955

15/08/2025

### LSA-H2650i-RP Supercharger

#### Key Features:

- High efficiency FDFI 2650 Supercharger
- High efficiency Inlet port (Race Port) geometry for increased high RPM / Boost performance
- Matt Black powder coat
- Manifold assembly # **99-AMFD14942-RP**



ENGINEERING PERFORMANCE SINCE 1955

15/08/2025

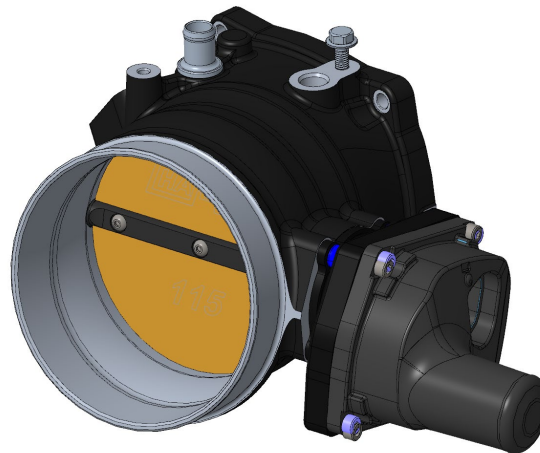
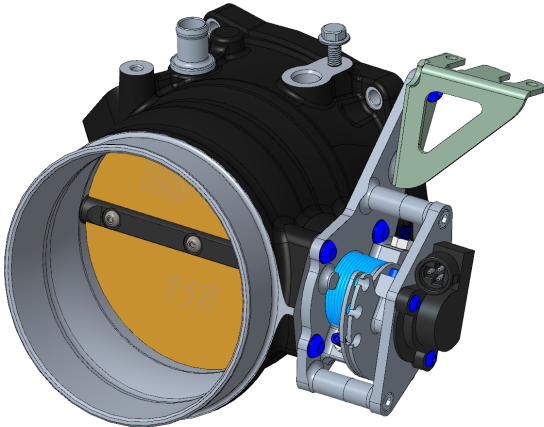


### LSA-H2650i-RP Supercharger

#### *Throttle adaptor / throttle body options*

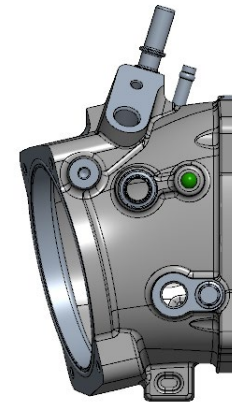
- Cast 103mm (LSA throttle position) – 102/103mm throttle bodies - 104x70mm bolt pattern
- Billet 120mm adaptor (“LSA Throttle position”) for LS, LT 120mm throttles - 126x70mm bolt pattern (for use with electric power steer vehicles. Only Idler pulley on LH cylinder head, no P/S pump)
- Integrated 115mm Throttle body (Black powder coat or as cast finish) ETC or Cable actuation

**115 Integrated cable (Black)**  
**99-AHSG15529**

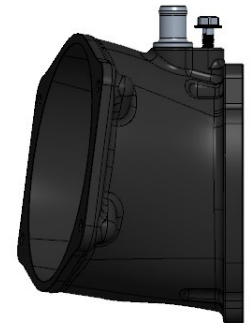
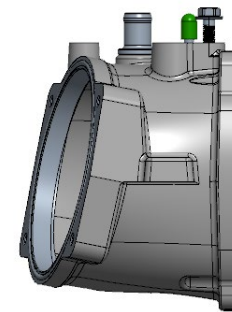


**115 Integrated ETC (Black)**  
**99-AHSG15539**

**103mm**  
**99-AADP14947**



**120mm**



ENGINEERING PERFORMANCE SINCE 1955

15/08/2025

# Tech Guide

## LSA-H2650i Supercharger



### Performance Figures

ENGINE	COMPONENTS	POWER CORRECTION	POWER	TORQUE	BOOST	PULLEY RATIO	FUEL
<i>Mainline Hub Dyno</i>							
LS - 427CI	Higgins heads, 10.5CR, T400, Chiller standard H2650I	SAE J1349 2004	1011 hp @ 7400 RPM		19 psi	3.38	E85
LS - 427CI	Higgins heads, 10.5CR, T400, Chiller Race Port H2650I	SAE J1349 2004	1089 hp @ 7400 RPM		20.5 psi	3.38	E85
<i>DynoLog Engine dyno</i>							
LS - 427CI	Standard H2650i	SAE J1349 2004	1227 hp @ 6800 RPM	1055 lb ft @ 5000 RPM	23.3 psi	3.38	E85
LS - 427CI	Race Port H2650i	SAE J1349 2004	1304 hp @ 6950 RPM	1099 lb ft @ 5400 RPM	26.2 psi	3.38	E85

Performance results will vary subject to variable factors such as weather, dyno type, fuel quality, engine and vehicle condition and configuration.

E N G I N E E R I N G   P E R F O R M A N C E   S I N C E   1 9 5 5

15/08/2025