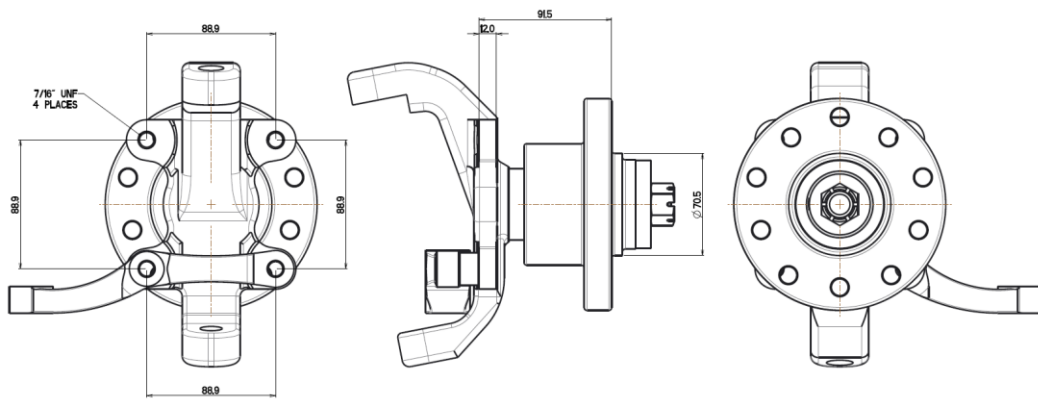
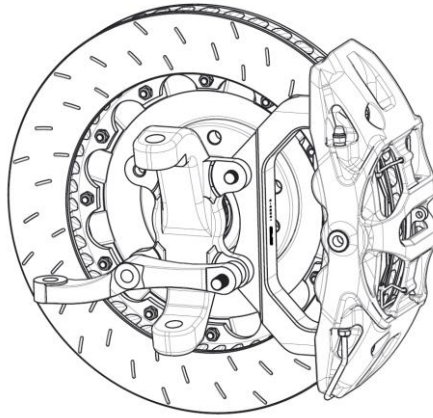


Tech Guide

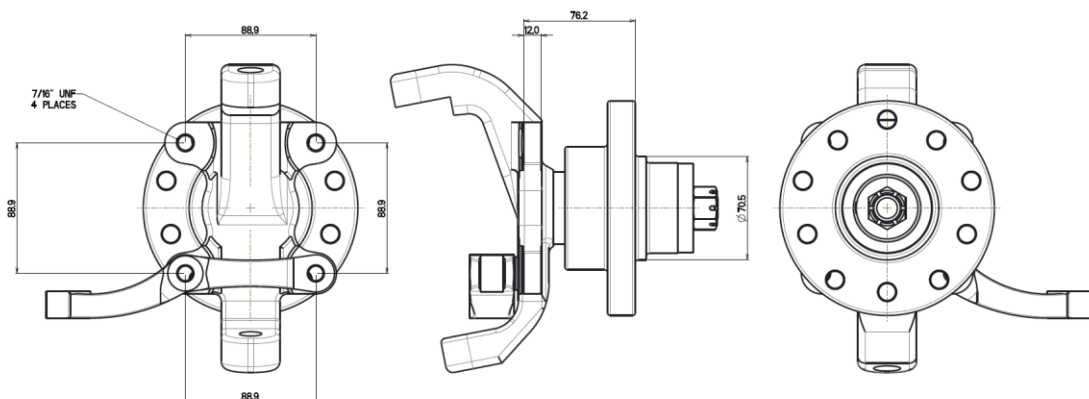
Harrop Ultimate Forged Calipers chassis kits



We offer two front kits using a Wilwood front 2.0" drop (P/N 830-9807) spindle and hub, the hub comes in two different offsets as shown below.



91.50mm off set hub uses kit KC8*R103A164B160



76.2mm off set hub uses kit *****

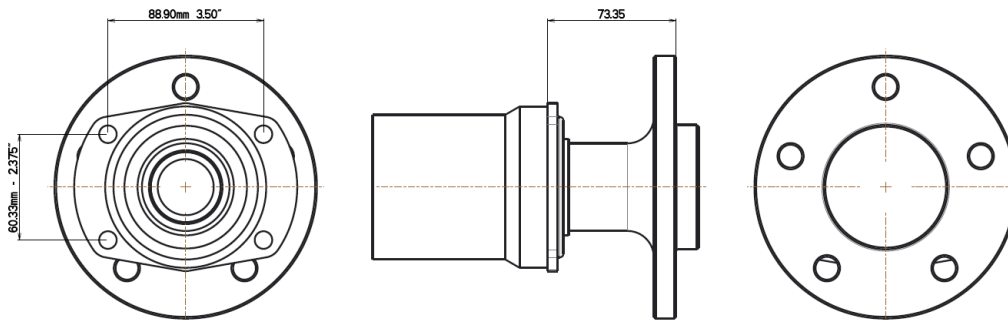
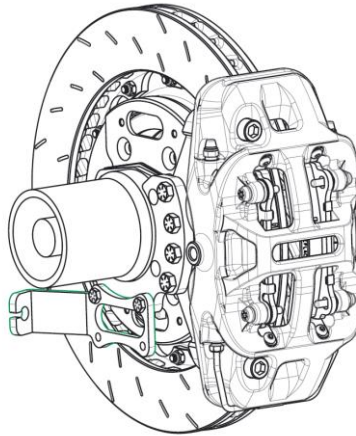
ENGINEERING PERFORMANCE SINCE 1955

Tech Guide

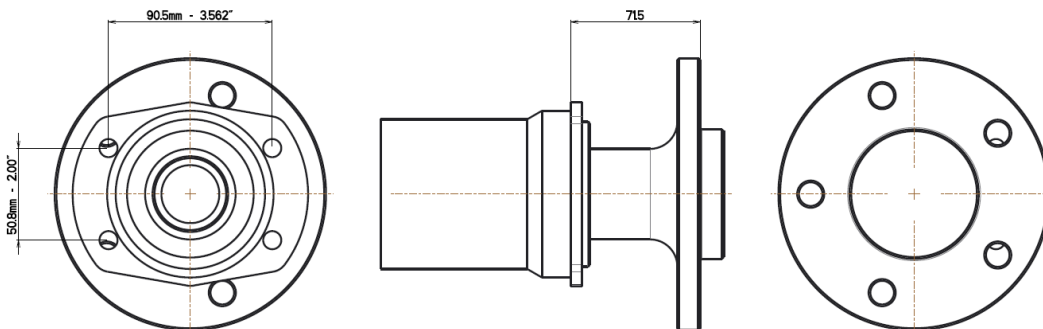
Harrop Ultimate Forged Calipers chassis kits



We offer two rear kits using a KORE3 Industries hand brake system, we offer them to suit the Ford 9" rear housing, the kit is to suit 2 different size bearing housings one is a 2.375" x 3.500" and the other is a 2.000" x 3.562" as shown below.



2.375" x 3.500" flange type housing uses kit KC9*R105A168B168



2.000" x 3.562" flange type housing uses kit KC9*R106A166B167

ENGINEERING PERFORMANCE SINCE 1955